



QNYM-NMLI FAKE VOLCANO ABANDONED FILM SET IN MONO LAKE



0:08 / 16:41



#162

Abandoned Fake Volcano - Movie Set - Secret Campsite in the Middle of Mono Lake

51,434 views • Sep 27, 2017



1.8K



DISLIKE



SHARE



SAVE

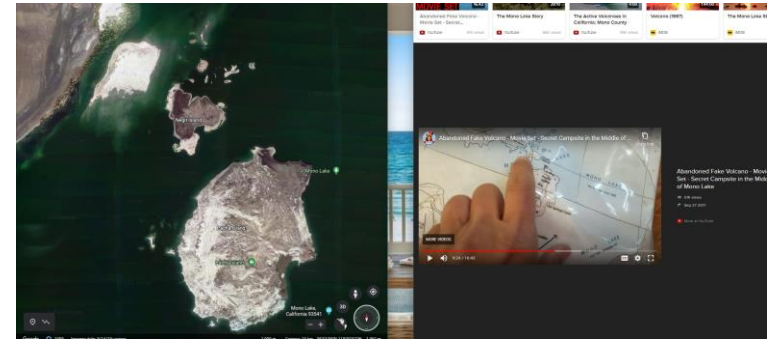


S4 Land:

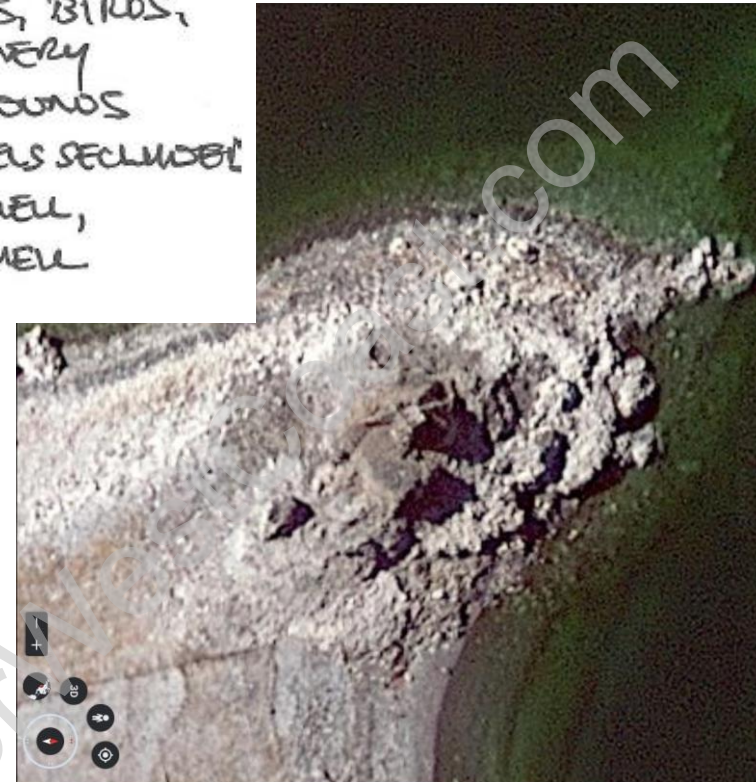
Reference to "Salty" and "Salt water" on Blackboard and Cascade Legend
Worked by man, vehicles, waves, birds, voices, machinery
Mechanical Sounds
Dry, Quiet, Feels secluded
Ocean Air Smell, Chemical Smell



- LAND 1
- COASTAL, SALT WATER, WAVES, DARK SOIL, ROCKY, DRY, WORKED BY MAN
 - VEHICLES, WAVES, BIRDS, VOICES, MACHINERY
 - MECHANICAL SOUNDS
 - DRY, QUIET, FEELS SECLUDED!
 - OCEAN AIR SMELL, CHEMICAL SMELL



Source: Google Earth and Youtube



Source: Google Earth

S4 Structure:

Tall, black at top, metal, levels or layers, tunnel or underground clamshell
Bang – metallic and mechanical sounds, voices, movement
Hard, cool, moist, musty, burnt
Feels hidden, secret



Source: monolake.org

- STRUCTURE 1
- TALL, BLACK@TOP, METAL, LEVELS OR LAYERS, TUNNEL OR UNDERGROUND CLAMSHELL
 - BANG, METALLIC AND MECHANICAL SOUNDS - VOICES - MOVEMENT
 - HARD, COOL, MOIST, MUSTY, BURNT
 - FEELS HIDDEN, SECRET.



#162
Abandoned Fake Volcano - Movie Set - Secret Campsite in the Middle of Mono Lake
51,434 views · Sep 27, 2017

Source: Youtube

S4 Water:

Water to steam conversion
Compressive and Explosive Force
Holding water, tank or tower
Rumble, Rattle, boom, rush, compressed rush
Gaseous, wet, hot, chaotic
Chemical, Sharp Taste, hot



Source: <https://www.modelshipsinthecinema.com/2014/08/fair-wind-to-java-1953.html>

- WATER TO STEAM CONVERSION,
- COMPRESSIVE AND EXPLOSIVE FORCE
- HOLDING WATER, TANK OR TOWER
- RUMBLE, RATTLE, BOOM, RUSH, COMPRESSED RUSH
- GASEOUS, WET, HOT, CHAOTIC
- CHEMICAL, SHARP TASTE, HOT,



Source: <https://www.modelshipsinthecinema.com/2014/08/fair-wind-to-java-1953.html>



#162
Abandoned Fake Volcano - Movie Set - Secret Campsite in the Middle of Mono Lake
51,434 views · Sep 27, 2017

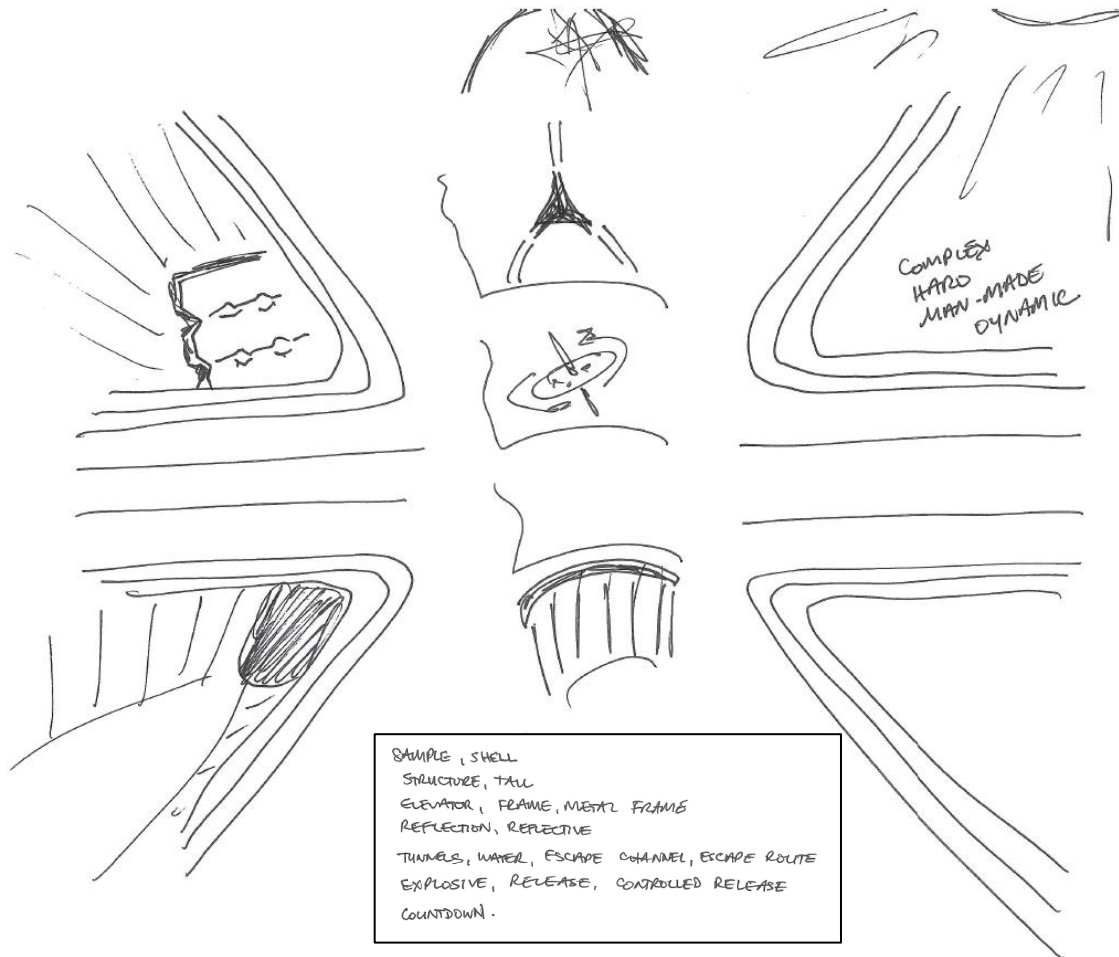
1.8K DISLIKE SHARE SAVE ...

Source: Youtube

NOTE: 45 gallon drums, youtube video mentions "burnt rock" in this location

S2 Phonics, S3 Site Sketch:

Sample, Shell, Structure, Tall, Elevator, Frame, Metal Frame
 Tunnels, Water, Escape channel, escape route
 Explosive, Release, Controlled Release
 Countdown



Playfair: Galley 4

	ROCK FALLING TUMBLE ECHO	AIR / WET SOIL	WARM	PLIABLE CRUMBLY
--	-----------------------------------	----------------------	------	--------------------

Source of RV Data:

Sample, Shell, Structure, Tall, Elevator, Frame, Metal Frame
 Tunnels, Water, Escape channel, escape route
 Explosive, Release, Controlled Release
 Countdown

RV Data	Source	Supporting Argument	Notes:
S4 Land	Overhead Site at time of filming	Cascade Legend references vehicles, voices, machinery, mechanical sounds, chemical smell. These artifacts would only be present at time of filming.	Google Earth images and YouTube video verification
S4 Structure	Overhead and Inside structure, multiple artifacts through RV session	Ideogram 2 and 3, S2 Phonics, S3 site sketch contain evidence of site contact. S4 structure references bang, metallic and mechanical sounds, voices, movement, mushy, burnt, feels hidden, secret. These artifacts were only present at time of filming.	Sources: https://wikizero.com/index.php/en/Fair_Wind_to_Java https://www.modelshipsinthecinema.com/2014/08/fair-wind-to-java-1953.html https://dbpedia.org/page/Fair_Wind_to_Java https://youtu.be/ALfPfl7VSp8
S4 Water	Site at time of filming	Evidence gathered contains reference to activities at time of filming: water to steam conversion, compressive and explosive force, holding water, tank or tower, rumble, rattle, boom, rush, compressed rush, gaseous, wet hot, chaotic, chemical, sharp taste	No evidence or description of the special effects explosion was located online, reference to “special effects by the Lydecker brothers” was found. Source: https://dbpedia.org/page/Fair_Wind_to_Java